



PS 10M

Noblelift Power Electric Walkie Stacker for Medium Applications

INTRODUCTION

The PS 10M based on the same reliable components and design-character as the electric walkie pallet truck PT 15 with monomast for perfect view to the loads. It is the cost-effective solution for all medium stacking applications.

ADVANTAGES

- Powerful and reliable Noblelift AC.
- Ergonomic tiller.
- Stability through additional stabilizers.
- Maintenance free battery.
- Built-in charger.

PS10M



Ergonomic tiller

The ergonomic tiller can be easily operated with either hand. Crawl speed button assist to operate safe in tight areas.



Built-in charger

The built-in charger gives higher autonomy during the application.



Reliable instruments

Battery discharge indicator with automatic lift cut-off function for higher battery lifetime.



Powerful batteries

Maintenance free VRLA-AGM batteries ensure longer operations

Several fork options

Several fork- length and width over the forks available

AC drive technology

AC drive system for more power, better energy consumption as well as for low maintenance costs



Optional straddle leg

Stabilizers ensure high driving stability.

Smart monomast

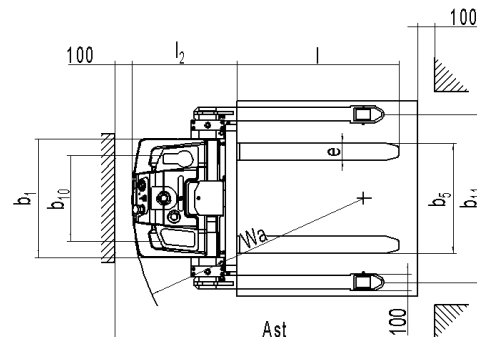
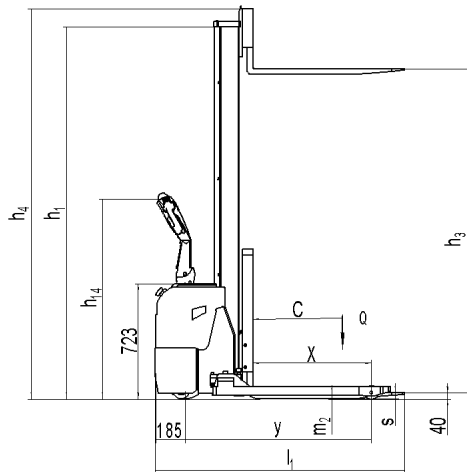
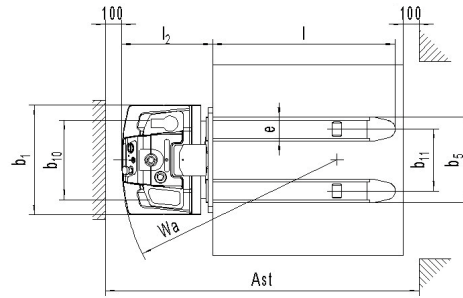
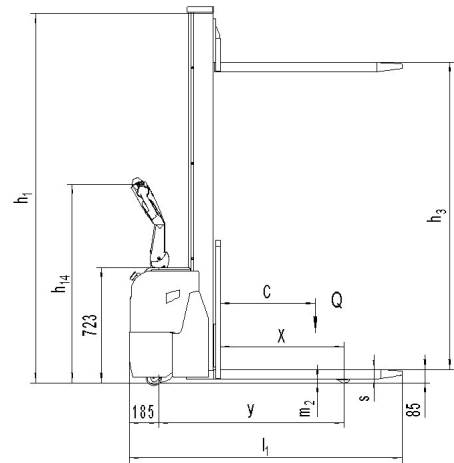
Numerous trays for storage such as drinks, cell phone, pen and others.



Easy to maneuver

Smart monomast for good view to the forks from both sides.

PS10MSL



Type sheet for industrial truck acc. to VDI 2198 1KG=2.2LB 1INCH=25.4MM

Distinguishing mark	1.2	Manufacturer's type designation		PS 10M	
	1.3	Power (battery ,diesel, petrol, gas, manual)		Battery	
	1.4	Operator type		Pedestrian	
	1.5	Load Capacity / rated load	Q(t)	1.0	
	1.6	Load centre distance	c(mm)	600	
	1.8	Load distance ,centre of drive axle to fork	x(mm)	782	
Weight	1.9	Wheelbase	Y(mm)	1170	
	2.1	Service weight	kg	536	566
	2.2	Axle loading, laden front/rear	kg	850/680	850/710
Tyres, chassis	2.3	Axle loading, unladen front/rear	kg	320/210	320/240
	3.1	Tires		Polyurethane (PU)	
	3.2	Tire size, front	Øx w (mm)	Ø252×89	
	3.3	Tire size, rear	Øx w (mm)	Ø84×70	
	3.4	Additional wheels(dimensions)	Øx w (mm)	Ø100×40	
	3.5	Wheels, number front/rear(x=driven wheels)		1x-2/2	
	3.6	Track, front	b10mm	500	
Dimensions	3.7	Track, rear	b11 (mm)	390	
	4.2	Lowered mast height	h1 (mm)	1970	2370
	4.3	Free Lift height	h2 (mm)	1530	1930
	4.4	Lift height	h3 (mm)	1530	1930
	4.5	Extended mast height	h4 (mm)	1970	2370
	4.9	Height of tiller in drive position min./ max.	h14mm	920/1250	
	4.15	Height, lowered t	h13mm	85	
	4.19	Overall length	l1mm	1725	
	4.20	Length to face of forks	l2mm	573	
	4.21	Overall width	b1mm	692	
	4.22	Fork dimensions	s/e/f (mm)	60/150/1150	
Performance data	4.25	Distance between fork-arms	b5 (mm)	540	
	4.32	Ground clearance, centre of wheelbase	m2mm	25	
	4.33	Aisle width for pallets 1000X1200 crossways	Ast (mm)	2200	
	4.34	Aisle width for pallets 800X1200 lengthways	Ast (mm)	2140	
	4.35	Turning radius	Wa (mm)	1360	
	5.1	Travel speed, laden/ unladen	km/h	5.5/5.5	
	5.2	Lift speed, laden/ unladen	m/s	0.076/0.185	
Electric- Motor	5.3	Lowering speed, laden/ unladen	m/s	0.105/0.110	
	5.8	Max. gradeability, laden/ unladen	%	5/10	
	5.10	Service brake		Electromagnetic	
	6.1	Drive motor rating S2 60min	kW	0.9	
	6.2	Lift motor rating at S3 4.5%	kW	1.2	
	6.3	Battery acc. to DIN 43531/35/36 A, B, C, no		No	
Additional data	6.4	Battery voltage, nominal capacity K5	V/Ah	2x12 / 106	
	6.6	Energy consumption acc: to VDI cycle	kWh/h	0.8	
	8.1	Type of drive control		AC- speed control	
	8.4	Sound level at driver's ear acc. to EN 12053	dB(A)	67	