



Mesh protection

Mesh protection for safety as well as great visibility during operation, no reflection from Plexiglas and high robustness.



Easy maintenance

Easy maintenance or replacement of the drive wheel after long term use.



ZF drive technology



Robust and Reliable Design

The robust chassis with the strong 0.3in thick apron protects the truck and the components against mechanical impacts from the outside.

In combination with the metal battery cover, the truck is well- equipped to reduce damages to a minimum.

Dirty floor environments have less influence to the vertical AC motor design as the components and the brake are out of the reach of direct impacts.

IP 54 protected controller, safe against dust and splash water.

The powerful Schabmüller maintenance free AC Drive motor in combination with the ZF gearbox, Intorq brake and Rader Vogel drive wheel gives best performance, efficiency and reliability to reduce operating costs!

Whether smooth or fast acceleration is applied, the AC Drive always gives the right and direct response.

PS xxTSL Series

Straddle-leg Electric Pedestrian Stacker with capacities of 1200/1600/1800kg

- Ergonomic, Compact and Safe Long Tiller Design.
- Precise Lifting and Lowering with Full Proportional Hydraulic System
- Powerful, Maintenance Free German AC Power Train
- Core Components from Top Quality Brands
- 3 Wheel Structure for Great Stability and Traction

 Long-tiller Design	 Capacity 1200-1800kg	 Easy Maintenance	 High Performance
 Powerful Battery	 Robust Design	 Full Proportional Lift	 CAN-BUS Technology



AUTHORIZED DEALER

NOBLELIFT CHINA

Add:528 Changzhou Road,Taihu Sub-district, Changxing, Zhejiang 313100 China
Tel:86-572-6210817 6210311
Fax:86-572-6210777 6128612
Email:info@nobelift.com
Http:www.nobelift.com www.nobelift.cn

NOBLELIFT

STRADDLE-LEG WALKIE ELECTRIC STACKER 1200/1600/1800



ADVANTAGES

- The PS xxTSL series is tailored to most pedestrian controlled stacking operations with capacities form 2600 lbs up to 4000 lbs.
- Ergonomic tiller allows for efficient and safe operation.
- Proportional lifting allows for efficient and safe lifting of any product at any lift speed.
- By using high quality, state of the art components, this stacker will out perform and last longer than comparable stackers on the market today.

PS xxTSL Series

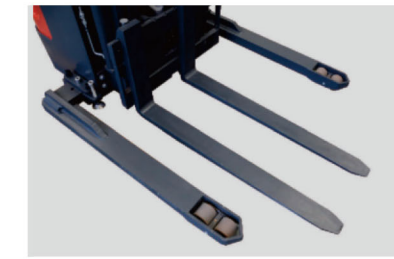
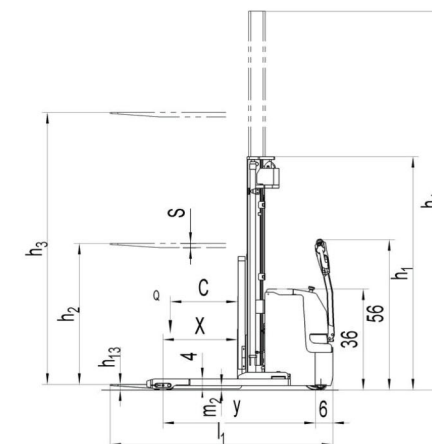
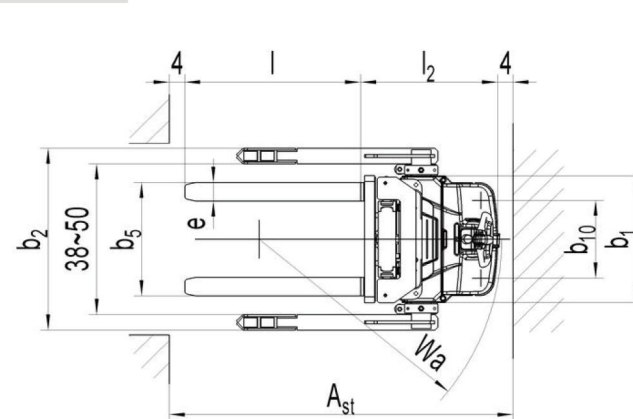


Type sheet for industrial truck acc. to VDI 2198

Distinguishing mark					
1.2	Manufacturer's type designation		PS12TSL(3600)	PS16TSL(4600)	PS18TSL(4600)
1.3	Power (battery ,diesel, petrol, gas, manual)			Battery	
1.4	Operator type			pedestrian	
1.5	Load Capacity / rated load	Q(t)	1.2	1.6	1.8
1.6	Load centre distance	C(mm)	600	600 ¹⁾	600 ¹⁾
1.8	Load distance ,centre of drive axle to fork	x(mm)	647	664 ²⁾	647 ²⁾
1.9	Wheelbase	y(mm)	1331	1378	1378
Weight					
2.1	Service weight	kg	1190	1480	1560
2.2	Axle loading, laden front/rear	kg	774/1598	827/2253	892/2378
2.3	Axle loading, unladen front/rear	kg	796/394	864/616	924/636
Tires, chassis					
3.1	Tires			Polyurethane (PU)	
3.2	Tire size, front	φxW (mm)		φ 230x70	
3.3	Tire size, rear	φxW (mm)		φ 84x70	
3.4	Additional wheels(dimensions)	φxW (mm)		φ 100x40	
3.5	Wheels, number front/rear(x=driven wheels)			1x+2/4	
3.6	Track, front	b ₁₀ (mm)		500	
Dimensions					
4.2	Lowered mast height	h ₁ (mm)	2308	2108	2228
4.3	Free Lift height	h ₂ (mm)	1760	1520	1520
4.4	Lift height	h ₃ (mm)	3560	4530	4530
4.5	Extended mast height	h ₄ (mm)	4088	5088	5208
4.9	Height of tiller in drive position min./ max.	h ₁₁ (mm)		890/1420	
4.15	Height, lowered	h ₁₂ (mm)		50	
4.19	Overall length	l ₁ (mm)	1990	2075	2092
4.20	Length to face of forks	l ₂ (mm)	840	925	942
4.21	Overall width	b ₁ /b ₂ (mm)		816/1170-1470	
4.22	Fork dimensions	s/e/l(mm)	35x100x1150	40x120x115	40x120x115
4.25	Distance between fork-arms	b ₃ (mm)	235-710	255-730	255-730
4.32	Ground clearance, centre of wheelbase	m ₁ (mm)		40	
4.33	Aisle width for pallets 1000X1200 crossways	A _{st} (mm)	2396	2437	2446
4.34	Aisle width for pallets 800X1200 lengthways	A _{st} (mm)	2382	2418	2432
4.35	Turning radius	Wa(mm)	1500	1550	1550
Performance					
5.1	Travel speed, laden/ unladen	mph	5.5/6.0	5.7/6.0	5.4/6.0
5.2	Lift speed, laden/ unladen	fpm	0.09/0.14	0.13/0.18	0.13/0.18
5.3	Lowering speed, laden/ unladen	fpm	0.25/0.2	0.20/0.14	0.20/0.14
5.8	Max. gradeability, laden/ unladen	%	6/12	6/12	6/10
5.10	Service brake			Electromagnetic	
Electric-engine					
6.1	Drive motor rating S2 60min	KW	1.3	1.4	1.4
6.2	Lift motor rating at S3 10%	KW	1.5	3.2	3.2
6.3	Battery acc. to DIN 43531/35/36 A, B, C, no		2PZB	3VBS	3VBS
6.4	Battery voltage, nominal capacity K5	V/Ah	24/180	24/270	24/270
6.5	Battery weight	kg	175	230	230
6.6	Energy consumption acc: to VDI cycle	kWh/h	0.95	1.59	1.70
Additional data					
8.1	Type of drive control			AC- speed control	
8.4	Sound level at driver's ear acc. to EN 12053	dB(A)		<70	

Note: 1) with side shift, load centre distance is 500mm 2) with side shift, load distance is 55mm shorter

Designation	Lowered mast height h ₁ (mm)	Free Lift height h ₂ (mm)	Lift height h ₃ (mm)	Extended mast height h ₄ (mm)	Lift+fork height h ₃ +h ₁₃ (mm)
PS12TSL					
Two stage mast	1958	/	2830	3380	2880
	2108	/	3130	3680	3180
	2308	/	3530	4080	3580
Two stage mast FFL (Full-Free-Lift)	1958	1410	2830	3380	2880
	2108	1560	3130	3680	3180
	2308	1760	3530	4080	3580
PS16TSL					
Two stage mast	1958	/	2830	3380	2880
	2108	/	3130	3680	3180
	2308	/	3530	4080	3580
Two stage mast FFL (Full-Free-Lift)	1958	1410	2830	3380	2880
	2108	1560	3130	3680	3180
	2308	1760	3530	4080	3580
Three stage mast	2008	/	4230	4780	4280
	2108	/	4530	5080	4580
	1908	1320	3930	4480	3980
Three stage mast FFL (Full-Free-Lift)	2008	1420	4230	4780	4280
	2108	1520	4530	5080	4580
	2343	1756	5230	5780	5280
PS18TSL					
Two stage mast	2078	/	2830	3500	2880
	2228	/	3130	3800	3180
	2428	/	3530	4200	3580
Two stage mast FFL (Full-Free-Lift)	1978	1310	2630	3300	2680
	2078	1410	2830	3500	2880
	2228	1560	3130	3800	3180
Three stage mast	2428	1760	3530	4200	3580
	2128	/	4230	4900	4280
	2228	/	4530	5200	4580
Three stage mast FFL (Full-Free-Lift)	1978	1310	3930	4600	3980
	2128	1420	4230	4900	4280
	2228	1520	4530	5200	4580



Straddle leg
Adjustable straddle leg design, suitable for diverse pallet sizes and more stability



Easy Assembly
Multi position straddle allows for easy assembly, multiple pallet widths and excellent stability.



For every application the right battery capacity
with the PS-L SL series for every truck the right battery:
PS 12TSL 24 volt 180 AH battery
PS 16/18TSL 24 volt 270 AH battery standard.



Maintenance friendly
The trucks design and component placement allow for easy service and maintenance. Two screws are used to hold cover in place allowing fast and easy access to all components. Drive wheel and caster can be removed and replaced without use of additional lifting devices.

Built in USB-connector
USB-connector for charging of additional devices during warehouse operations.

CAN-BUS

CANBUS technology
Can-Bus technology allows for fewer wires and increased dependability. Can-Bus technology slows for easier adjustments and troubleshooting reducing downtime. New digital display outperforms analog.



ZAPI Controller
ZAPI Controller and Battery Indicator with hour meter as well as fault code display for easy maintenance.



Electronic proportional lifting and lowering
The electronically controlled proportional lifting system ensures accurate positioning and stacking operations at every lifting height.

Proportional lifting increases productivity especially at higher lift heights.

Long tiller design for ergonomics and safety

Through the long tiller design the operator can always keep a safe distance to the truck during proceeding the work very ergonomically.

The long tiller allows the operator to keep a safe distance while providing precision operations.

Reduced force to the operator allows for easy and ergonomic control of the operation of the truck.

Handle operating heights are varied allowing for comfortable and efficient use of multiple operators.