

Operating Instructions Parts List



TF30 and TF50 Lift Table

Note: Owner and operator MUST read and understand this operating instructions before use this lift table.

Thank you for using this lift table. Your lift table is made of high quality steel and is designed for the horizontal lifting and transport of loads on a level, fixed base. For your safety and correct operation, please carefully read this instruction before using it and keep it on file for future reference.

NOTE: All of the information reported herein is based on data available at the moment of printing. We reserves the right to modify our own products at any moment without notice and incurring in any sanction. So, it is suggested to always verify possible updates.

1. WARNINGS

- 1、 DO NOT put foot or hand in scissors mechanism.
- 2、 DO NOT allow other person to stand in front or behind lift table when it is moving.
- 3、 DO NOT move lift table when table is in raised position. Load could fall down.
- 4、 DO NOT enter under table.
- 5、 DO NOT overload lift table.
- 6、 DO NOT put foot in front of rolling wheels, Injury could fall down.
- 7、 WATCH difference of floor level when moving lift table. Load could fall down.
- 8、 DO NOT use lift table on slope or inclined surface, lift table may become uncontrollable and create danger.
- 9、 DO NOT lift people. People could fall down and suffer severe injury.

2. CAUTION

- 1、 Read this operation manual carefully and understand completely operating lift table. Improper operation could create danger.
- 2、 This lift table is a movable lifter designed to lift or lower rated load on table. DO NOT use lift table for other purpose than its intended use.
- 3、 DO NOT allow person to operate lift table that dose not understand its operation.
- 4、 DO NOT lower table too fast. Load could fall down and create danger.
- 5、 KEEP watching the condition of load. Stop operating lift table if load becomes unstable.
- 6、 Braking lift table when sliding load on or off table.
- 7、 DO NOT side or end load. Load must be distributed on at least 80% of table area.
- 8、 DO NOT use lift table with unstable, unbalanced loosely load.
- 9、 Practice maintenance work according to service instructions.
- 10、 DO NOT modify lift table without manufacturers written consent.
- 11、 REMOVE load from table and use safety stopper to prevent table from lowering when servicing lift table.
- 12、 This lift table is not designed to be water resistant. Use lift table under dry condition.

3. DAILY INSPECTION

Daily inspection is effective to find the malfunction or fault on lift table. Check lift table on the following points before operation .

- (1) Check for scratch, bending or cracking on the lift table.
- (2) Check if there is any oil leakage from the cylinder.
- (3) Check the vertical creep of the table.
- (4) Check the smooth movement of the wheels.

- (5) Check the function of brake.
- (6) Check if all the bolts and nuts are tightened firmly.

CAUTION: DO NOT use lift table if any malfunction or fault is found.

4. OPERATING LIFT TABLE

4-1. How to use the brake.

CAUTION: Brake lift when not moving it in order to prevent sudden movement.

The brake is equipped with the swivel caster on the right side.

- (1) Brake the wheel, press the brake pedal.
- (2) Release the brake, lift up the brake pedal.

4-2. Lifting the table

WARNING

1. DO NOT overload lift table. Stay within its rated capacity.
2. DO NOT side or end. Load must be distributed on at least 80% of table area.

Press the lifting pedal several times until the table reaches the desired position. The table does not elevate after reaching the highest position even if the lifting pedal is pressed. The table lowers slightly after reaching the highest position.

| MAXIMUM CAPACITY OF TABLE | |
|---------------------------|-------|
| TF 30 | TF 50 |
| 300Kg | 500Kg |

NOTE: The hydraulic cylinder is designed to hold table. As is the nature of hydraulic system, table lowers very slowly over an extended period of time. Please note the table does not stay at the same position indefinitely.

4-3. Lowering table

WARNING: DO NOT put foot or hand in scissors mechanism

- Pull the control handle make table down..

5. Specifications

| Model | Capacity (kg) | Table (mm) | Table Height (mm) | Wheel (mm) | Weight (Kg) |
|-------|---------------|-----------------|-------------------|------------|-------------|
| TF30 | 300 | 815X500/850X500 | 285-880 | Φ125 | 77 |
| TF50 | 500 | 815X500/850X500 | 285-880 | Φ125 | 81 |

- USA type before /. European type behind /.

6. Service Instructions

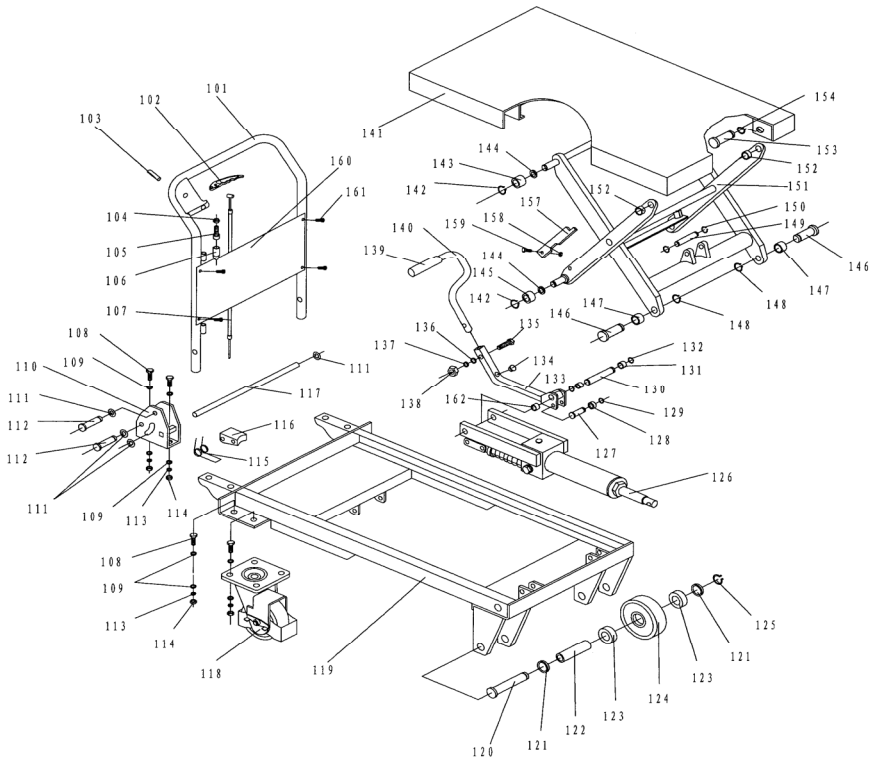
6-1. Lubricate each point described below every month:

6-2. Change hydraulic oil every 12 months.

Lubricating Points

- (1) Fitting of cylinder---Oil
- (2) Roller friction surface---Grease
- (3) Link pin ---Oil
- (4) Pedal fitting point---Oil
- (5) Grease nipple---Grease

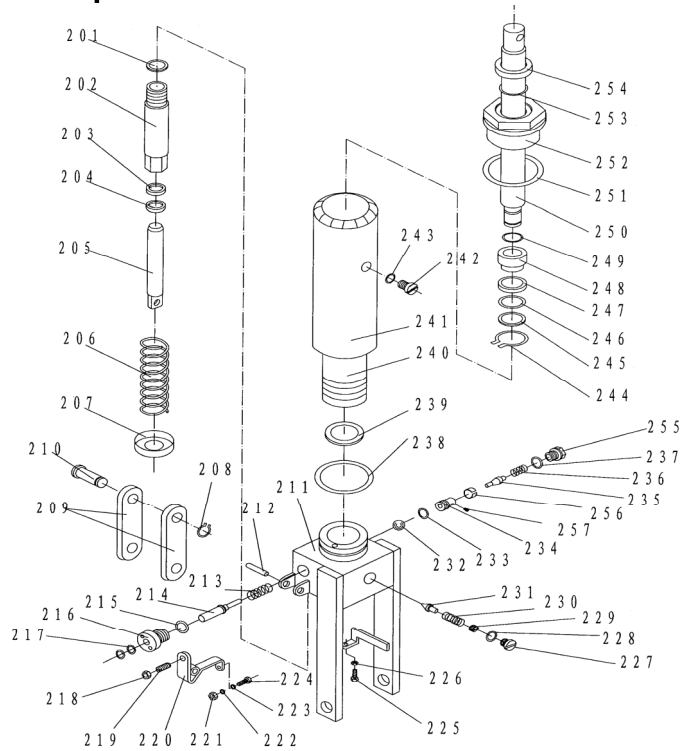
7. Part List of Table



| No | Description | Qty. | No | Description | Qty. |
|-----|-----------------|------|-----|------------------|------|
| 101 | Handle Grip | 1 | 131 | Washer | 2 |
| 102 | Control Handle | 1 | 132 | Retaining Ring | 2 |
| 103 | Elastic Pin | 1 | 133 | Connecting Rod | 1 |
| 104 | Nut | 1 | 134 | Cushion | 1 |
| 105 | Bolt with Hole | 1 | 135 | Bolt | 1 |
| 106 | Jacket | 1 | 136 | Washer | 1 |
| 107 | Pull Rod | 1 | 137 | Elastic Washer | 1 |
| 108 | Bolt | 12 | 138 | Nut | 1 |
| 109 | Washer | 12 | 139 | Protecting Cover | 1 |
| 110 | Seat of Grip | 2 | 140 | Pedal Bar | 1 |
| 111 | Retaining Ring | 6 | 141 | Table | 1 |
| 112 | Pin | 4 | 142 | Retaining Ring | 4 |
| 113 | Elastic Washer | 12 | 143 | Roller | 2 |
| 114 | Nut | 12 | 144 | Washer | 4 |
| 115 | Spring | 2 | 145 | Roller | 2 |
| 116 | Cushion | 2 | 146 | Pin | 2 |
| 117 | Long Shaft | 1 | 147 | Bushing | 2 |
| 118 | Universal Wheel | 2 | 148 | Retaining Ring | 2 |
| 119 | Frame | 1 | 149 | Pin | 1 |
| 120 | Pin | 2 | 150 | Retaining Ring | 2 |
| 121 | Washer | 4 | 151 | Fork Arm | 1 |
| 122 | Axle | 2 | 152 | Bushing | 2 |
| 123 | Bearing | 4 | 153 | Pin | 2 |
| 124 | Wheel | 2 | 154 | Retaining Ring | 2 |
| 125 | Retaining Ring | 2 | 157 | Support Plank | 2 |
| 126 | Pump Unit | 1 | 158 | Nut | 2 |
| 127 | Pin | 1 | 159 | Screw | 2 |
| 128 | Washer | 1 | 160 | Protecting board | 1 |
| 129 | Retaining Ring | 1 | 161 | Bolt | 4 |
| 130 | Pin | 1 | 162 | Bushing | 2 |

8. Part List of Pump

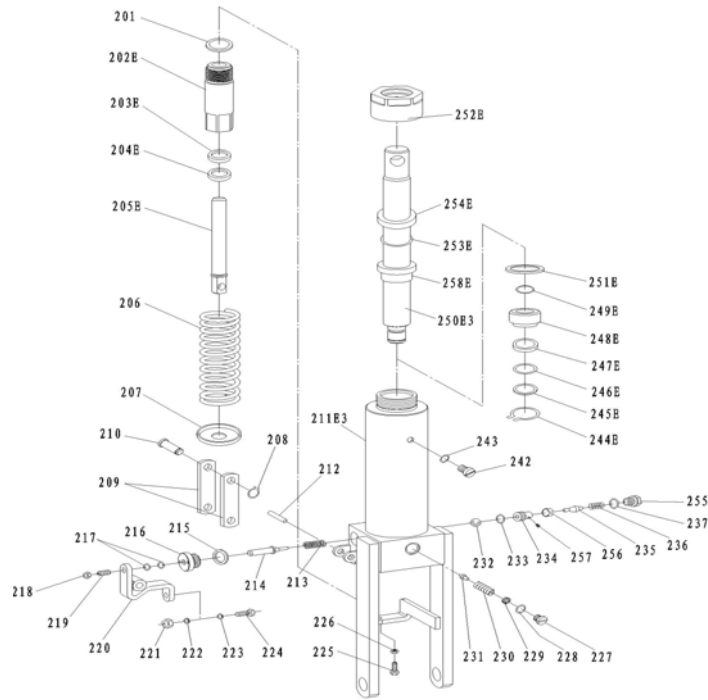
TF50



| No | Description | Quantity | No | Description | Quantity |
|-----|----------------|----------|-----|--------------------------|----------|
| 201 | Seal Washer | 1 | 230 | Spring | 1 |
| 202 | Pump Cylinder | 1 | 231 | Spindle of Safety Valve | 1 |
| 203 | Dust Ring | 1 | 232 | Steel Ball | 1 |
| 204 | Y - Seal | 1 | 233 | O-Ring | 1 |
| 205 | Pump Piston | 1 | 234 | Seat of Pumping Valve | 1 |
| 206 | Spring | 1 | 235 | Spindle of Pumping Valve | 1 |
| 207 | Spring Cap | 1 | 236 | Spring | 1 |
| 208 | Retaining Ring | 1 | 237 | Seal Washer | 1 |
| 209 | Joint Plate | 2 | 238 | O - Ring | 1 |
| 210 | Pin | 1 | 239 | Seal Washer | 1 |
| 211 | Pump Body | 1 | 240 | Cylinder | 1 |
| 212 | Elastic Pin | 1 | 241 | Housing | 1 |
| 213 | Spring | 1 | 242 | Bolt | 1 |
| 214 | Strike Pin | 1 | 243 | Seal Washer | 1 |
| 215 | Seal Washer | 1 | 244 | Retaining Ring | 1 |
| 216 | Axle Sleeve | 1 | 245 | Washer | 1 |
| 217 | O - Ring | 2 | 246 | O - Ring | 1 |
| 218 | Nut | 1 | 247 | Cup Packing | 1 |
| 219 | Screw | 1 | 248 | Piston | 1 |
| 220 | Lever Plate | 1 | 249 | O - Ring | 1 |
| 221 | Nut | 1 | 250 | Piston Rod | 1 |
| 222 | Elastic Washer | 1 | 251 | Seal Washer | 1 |
| 223 | Washer | 1 | 252 | Cylinder Cap | 1 |
| 224 | Bolt with Hole | 1 | 253 | O - Ring | 1 |
| 225 | Bolt with Hole | 1 | 254 | Dust Ring | 1 |
| 226 | Nut | 1 | 255 | Plug | 1 |
| 227 | Plug | 1 | 256 | Liquid Throttle Sheath | 1 |
| 228 | O - Ring | 1 | 257 | Bolt | 1 |
| 229 | Adjusting Bolt | 1 | | | |

9. Part List of Pump

TF30



| No | Description | Quantity | No | Description | Quantity |
|-------|----------------|----------|-------|--------------------------|----------|
| 201 | Seal Washer | 1 | 228 | O-Ring | 1 |
| 202E | Pump Cylinder | 1 | 229 | Adjusting Bolt | 1 |
| 203E | Dust Ring | 1 | 230 | Spring | 1 |
| 204E | Y-Seal | 1 | 231 | Spindle of Safety Valve | 1 |
| 205E | Pump Piston | 1 | 232 | Steel Ball | 1 |
| 206 | Spring | 1 | 233 | O-Ring | 1 |
| 207 | Spring Cap | 1 | 234 | Seat of Pumping Valve | 1 |
| 208 | Retaining Ring | 1 | 235 | Spindle of Pumping Valve | 1 |
| 209 | Joint Plate | 2 | 236 | Spring | 1 |
| 210 | Pin | 1 | 237 | Seal Washer | 1 |
| 211E3 | Pump Body | 1 | 242 | Bolt | 1 |
| 212 | Elastic Pin | 1 | 243 | Seal Washer | 1 |
| 213 | Spring | 1 | 244E | Retaining Ring | 1 |
| 214 | Strike Pin | 1 | 245E | Washer | 1 |
| 215 | Seal Washer | 1 | 246E | O-Ring | 1 |
| 216 | Axle Sleeve | 1 | 247E | Cup Packing | 1 |
| 217 | O-Ring | 2 | 248E | Piston | 1 |
| 218 | Nut | 1 | 249E | O-Ring | 1 |
| 219 | Screw | 1 | 250E3 | Piston Rod | 1 |
| 220 | Lever Plate | 1 | 251E | Seal Washer | 1 |
| 221 | Nut | 1 | 252E | Cylinder Cap | 1 |
| 222 | Elastic Washer | 1 | 253E | O-Ring | 1 |
| 223 | Washer | 1 | 254E | Dust Ring | 1 |
| 224 | Bolt With Hole | 1 | 255 | Plug | 1 |
| 225 | Bolt With Hole | 1 | 256 | Liquid Throttle Sheath | 1 |
| 226 | Nut | 1 | 257 | Bolt | 1 |
| 227 | Plug | 1 | 258E | Sleeve | 1 |

ATTENTION:

1. The worn batteries and accumulators were solid wastes with danger. They are harmful to our health and environment. To avoid polluting with the leaking liquid, we should put the replacements into a special and leak-tight container. To avoid the hurt to people, it should be put away from the place people lived and worked with a warning sticker. The collected worn batteries and accumulators should be handed in to a competent institution according to the local statute.
2. The waste packages should be sorted and put into solid dustbins according to the materials and be collected disposal by local special environment protection bureau. To avoid pollution, it's forbidden to throw away the wastes random.
3. To avoid leaking during the use of the products, the user should prepare some absorbable materials (scraps of wooden or dry duster cloth) to absorb the leaking oil in time. To avoid second pollution to the environment, the used absorbable materials should be handed in to the special department in term of the local statute.